



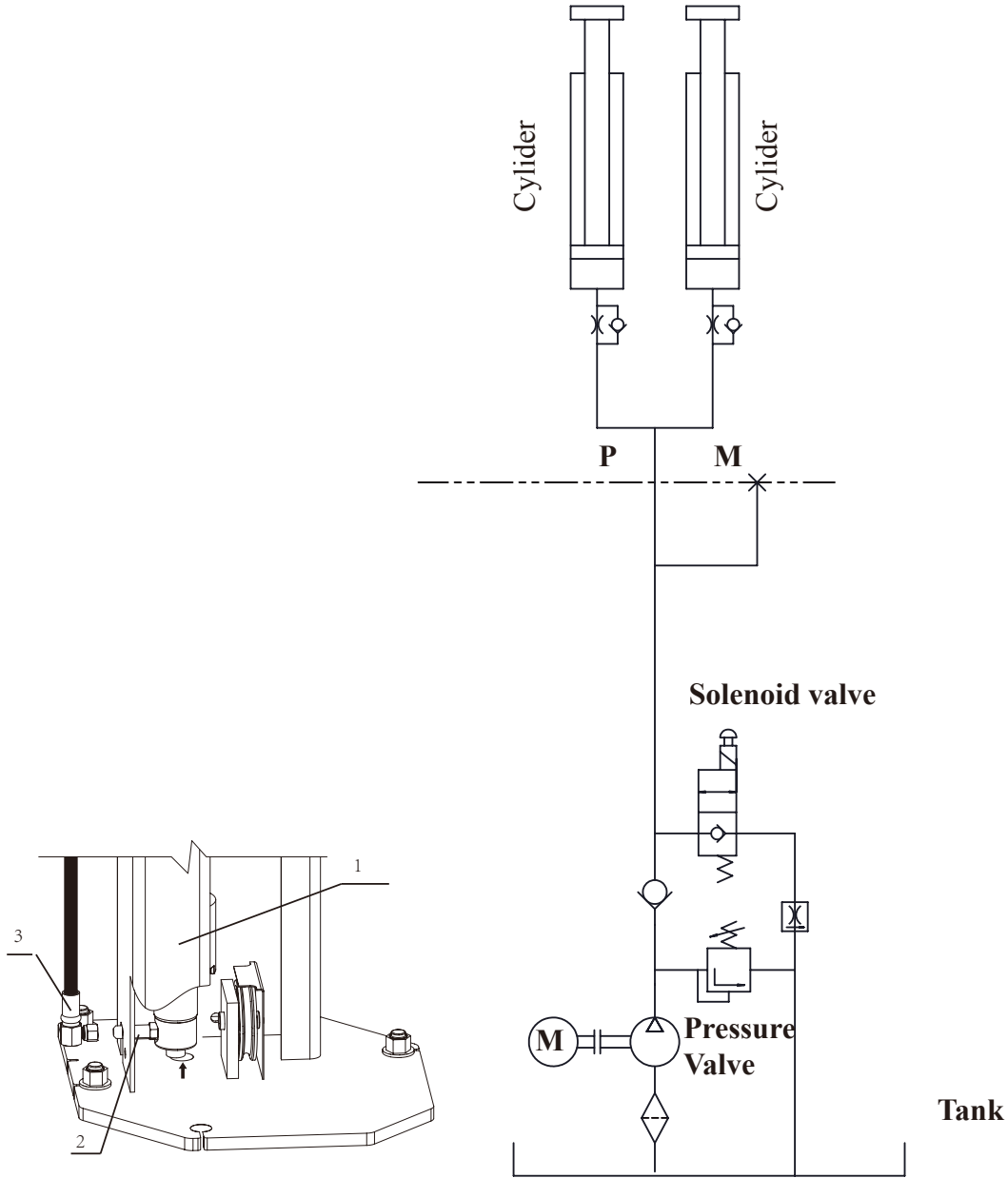
# Annex

## 2 column surface -mounted Lift SPOA3T-5 Series 700

### Table of Contents

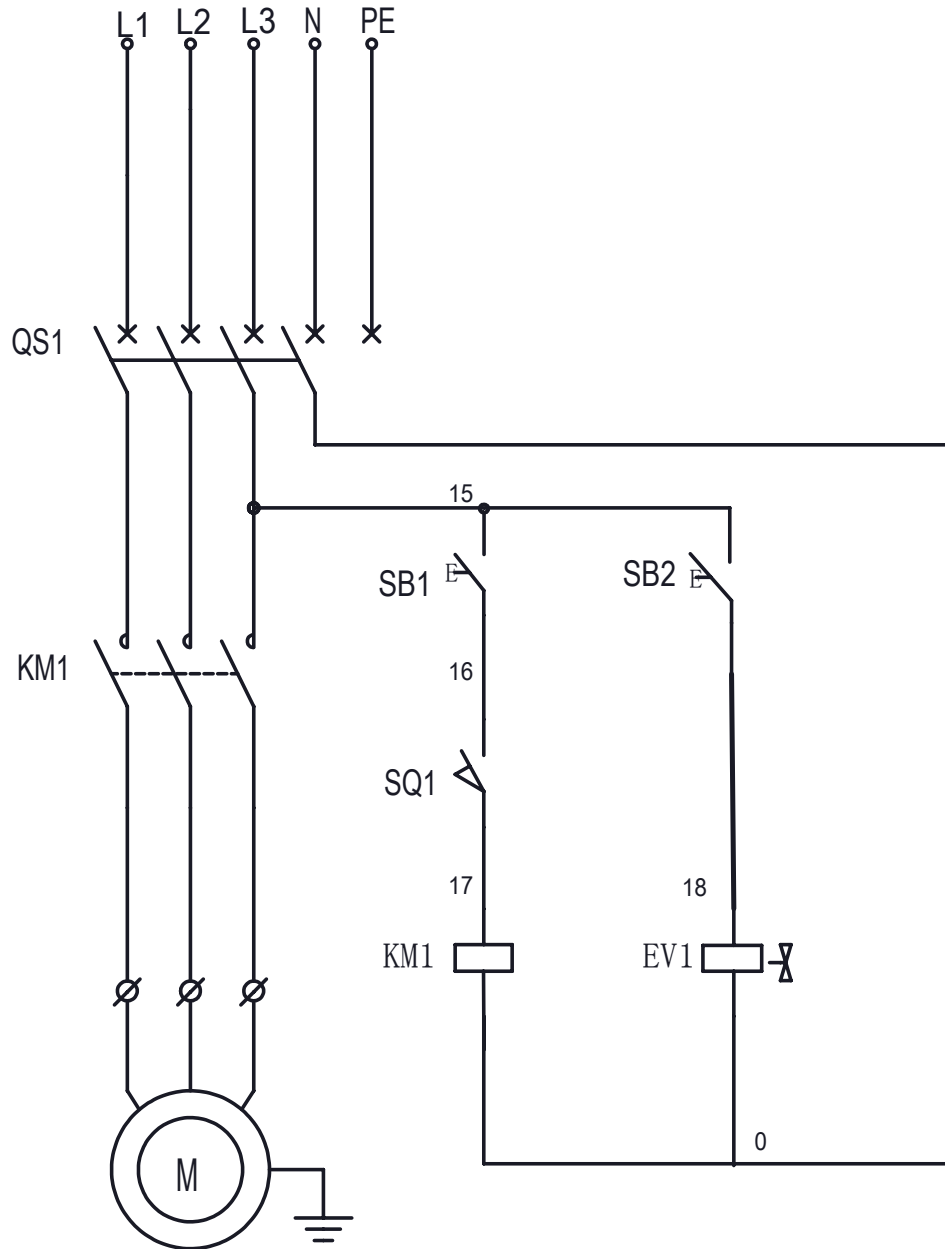
Hydraulic circuit diagram.....	2
Electric wiring diagram .....	3
Parts break down.....	6
Spare parts list .....	17

# I. Hydraulic circuit diagram

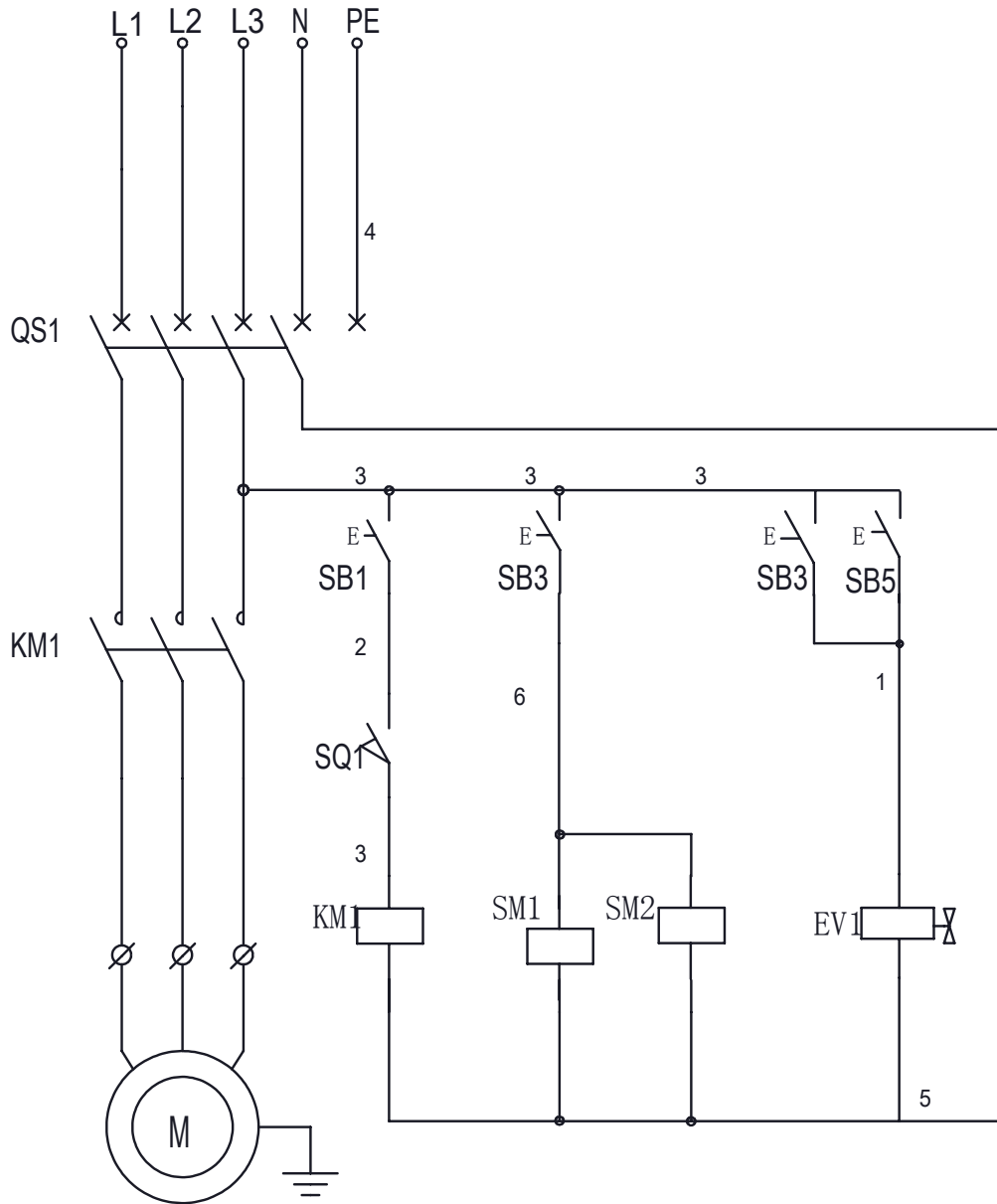


	Partno.	Description	Qty
1	N382Y	Hydraulic cylinder	2
2	ATO-7-9802-1	Fitting	2
3	N3113	Power unit hydraulic hose	1
	G3T-2103(N3114)	Overhead hydraulic hose for EH1	1
	G3T-2203(N3115)	Overhead hydraulic hose for EH2	

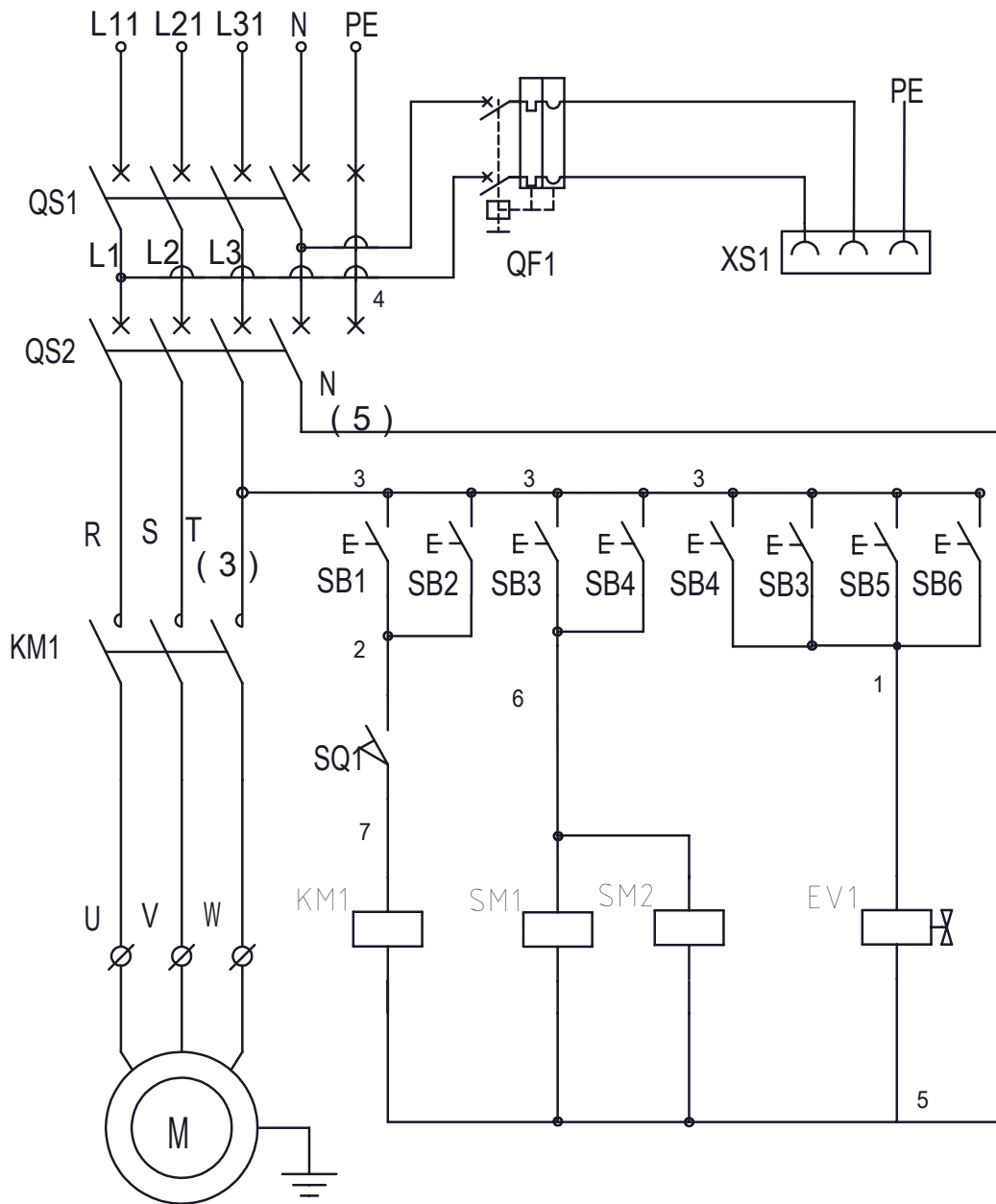
## II. Electric wiring diagram



For SPOA3T M version			
QS1	Main switch	EV1	Descent valve
SQ1	Up Limit switch	KM1	Contactor
SB1	Up button	SB2	Lower button



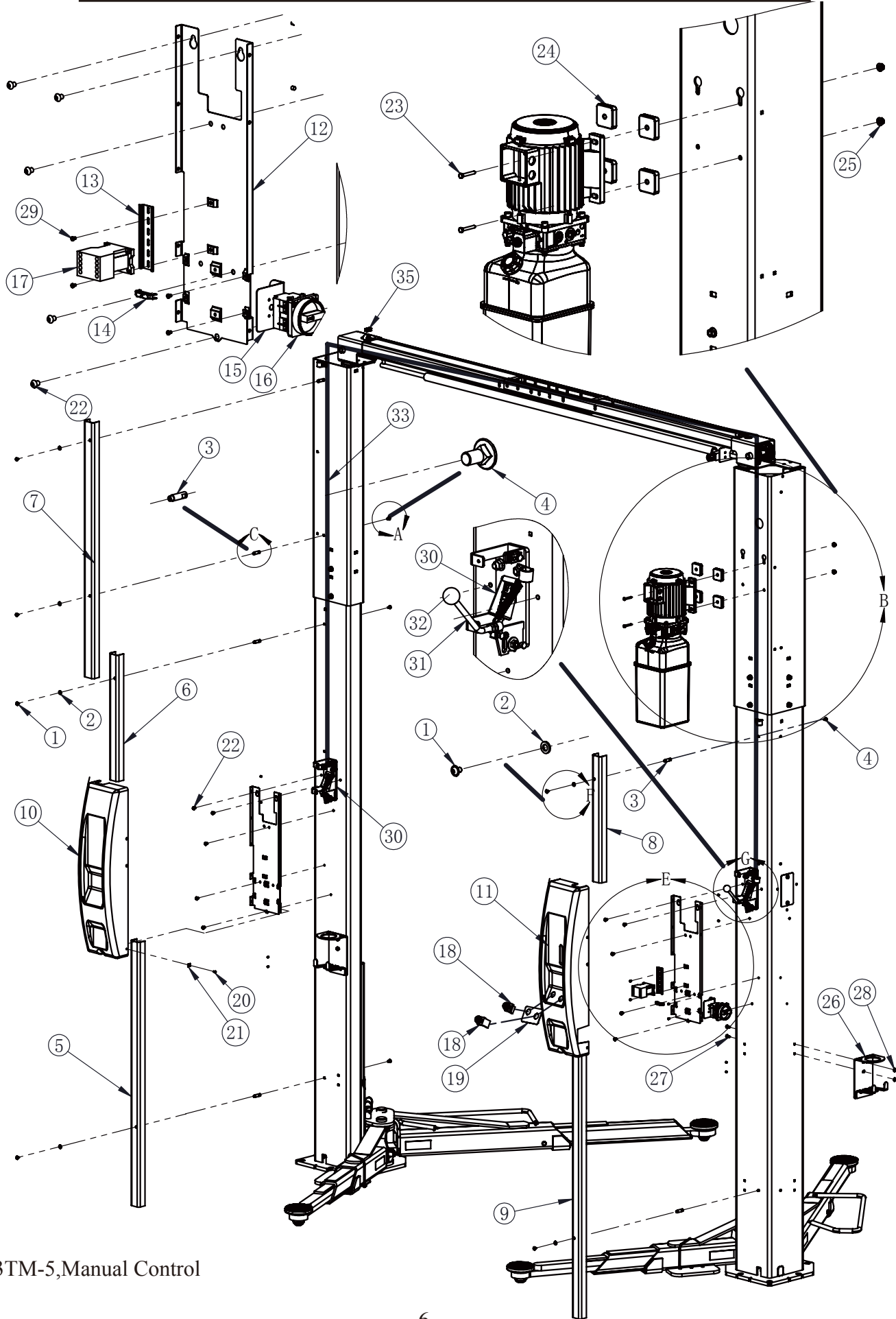
For SPOA3T E version (one side control)			
QS1	Main switch	EV1	Descent valve
SQ1	Up Limit switch	KM1	Contacteur
SB1	Up button	SB3	Lower button
SB5	Padlock button		
SM1/SM2 Release of the solendid			



For SPOA3T E version (two side control)			
Slave side		Main side	
QS1	Main switch	QS2	Main switch
QF1	Leakage protector	KM1	Contactor
SB2	Up button	SB1	Up button
SB4	Lower button	SB3	Lower button
SB6	Padlock button	SB5	Padlock button
XS1	Euro receptacle	SQ1	Up limit switch
		EV1	Descent valve
SM1/SM2 Release of the solenoid			

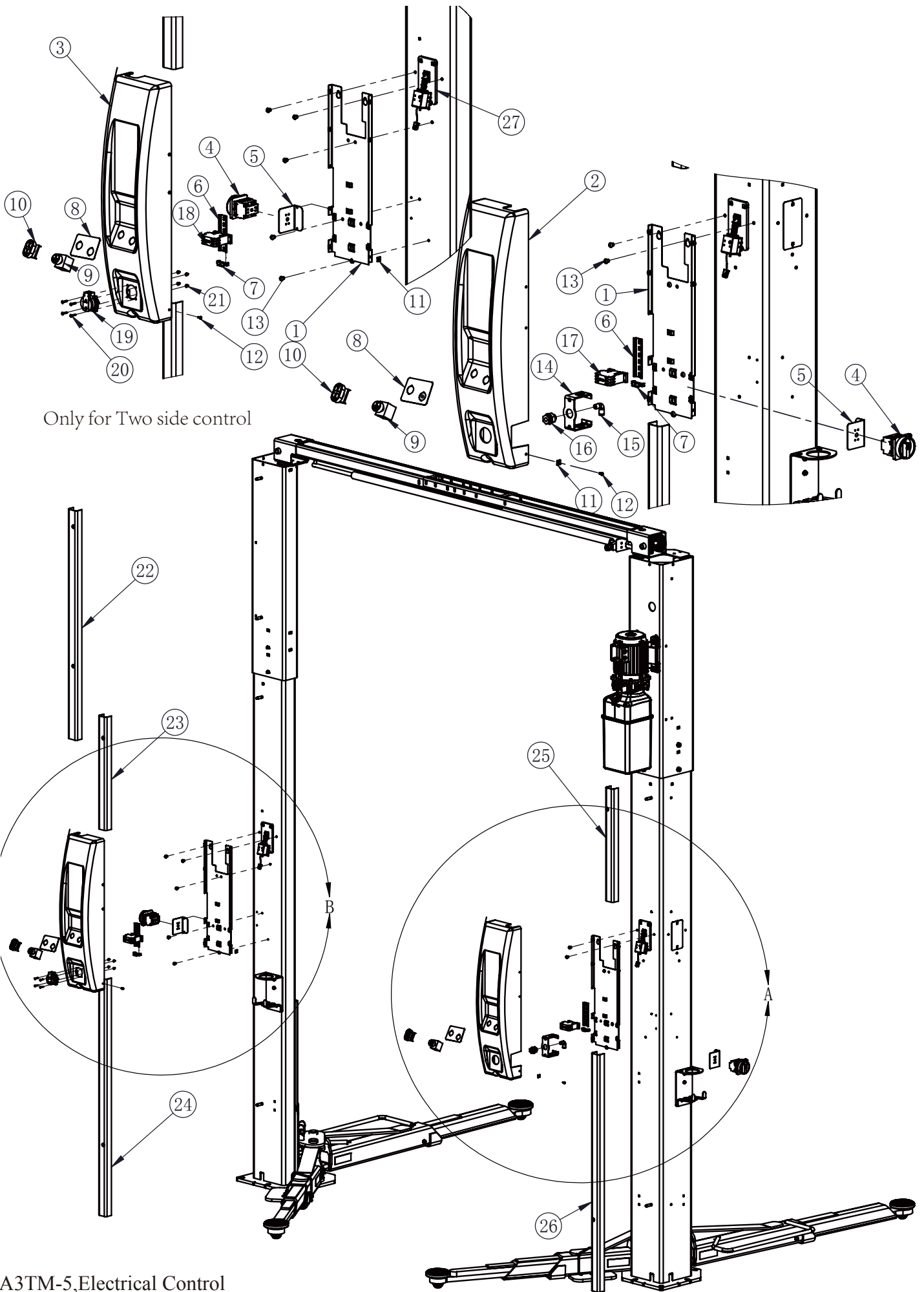
# Annex III. Parts Break Down

PB-SPOA-1



## Detail for PB-SPOA-1

	PartNo.	Description	Qty
1	41659	M6*1.0*10mm Lg flanged BHCS	6
2	G3T-1005(N1224-7)	Rubber washer	6
3	G3T-1004(N1224-6)	Mounting stud	6
4	41658(BCQ061012820)	Carriage bolt,plated M6*1.0*12	6
5	FA7417-11A	Plastic wire cover	1
6	FA7417-11C	Plastic wire cover	1
7	FA7417-11E	Plastic wire cover	1
8	FA7417-11D	Plastic wire cover	1
9	FA7417-11B	Plastic wire cover	1
10	SPOA-PC2	Plastic control cover	1
11	SPOA-PC1	Plastic control cover(main side)	1
12	FA7274-7Y	Cover mounting base plate	2
13	FA7274-10D	Mounting plate	1
14	KTB2-STB	End capped	1
15	FA7274-9D	Mounting plate	1
16	TO-2-8900(XG150046)	Main switch	1
17	XTCG018C00DT	AC contactor	1
18	A22-RD-30/K10	Button	2
19	NP797-1	Label	1
20	B19-#8-1/2	Cross recessed head tapping screw #8-1/2	12
21	FA7180-11	U-type nut clip	12
22	B25-8*10	Pan head screw M8*10	10
23	B11-8*40(41622)	Hexagon bolt M8*40(8.8)	4
24	FA965	Vibration pad	4
25	NFS08100082S	Serrated flanged locknut,plated M8	4
26	G3T-1008	Tool holder	2
27	41647	Carriage bolt,plated M6*16	4
28	NFS06100082S(41656)	Serrated flanged locknut,plated M6	4
29	B23-4*6	Screw M4*6	4
30	N624	Lock system assembly	2
31	HTO-1210	Handle	1
32	FC134-91	Rubber ball1	1
33	FJ7595-1	Steel cable	1
34	SPOA3T-2001	Brake line pipe(For EH1)	2
	SPOA3T-2002	Brake line pipe(for EH2)	2
35	N619	Cable end bracket	2
36	N63-1	Latch cable clamp assembly (not show)	1

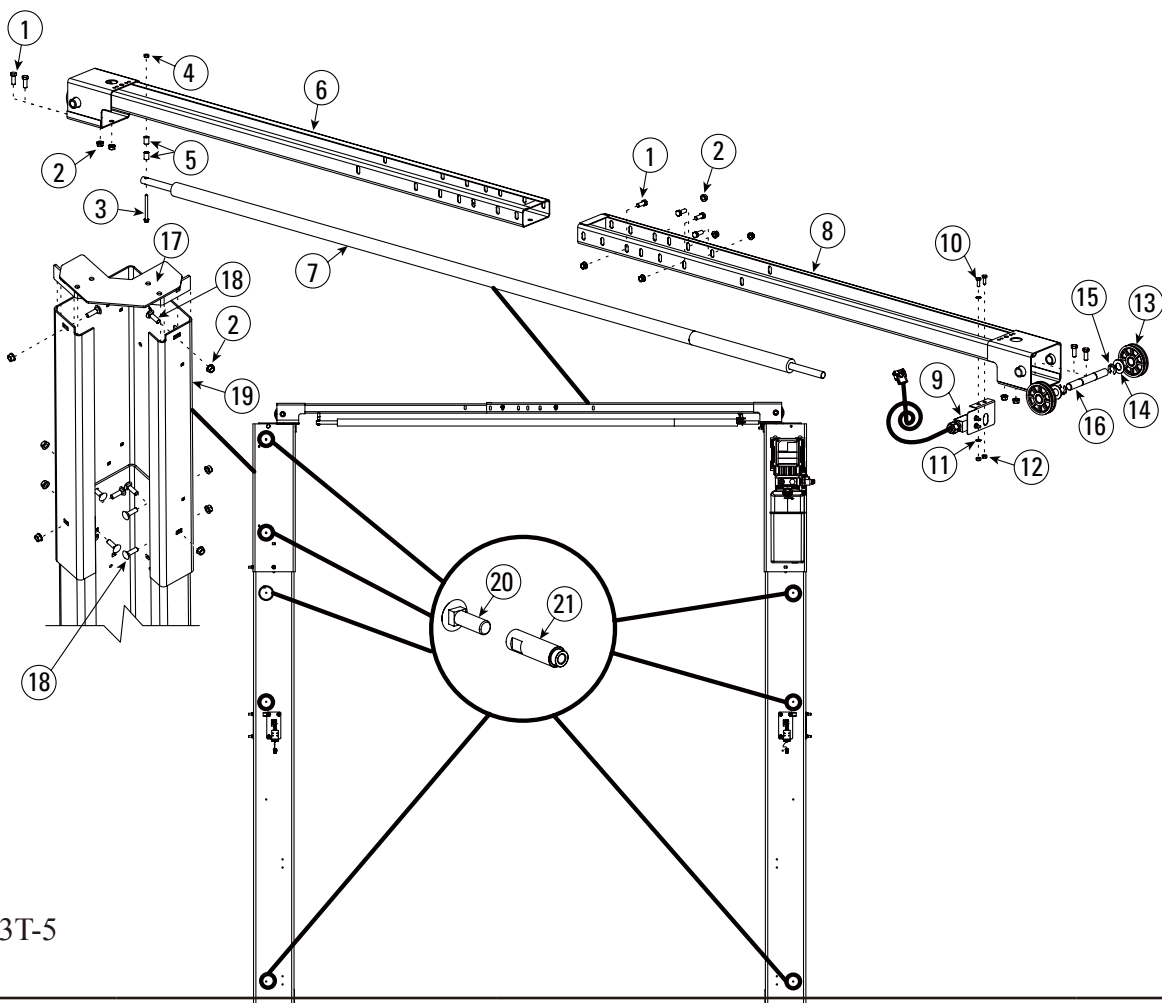


SPOA3TM-5,Electrical Control



Detail for PB-SPOA-2				
	Partno.	Description	QTY for S	QTY for C
1	FA7274-7Y	Cover mounting base plate	2	2
2	SPOA-PC3	Plastic control cover	1	1
3	SPOA-PC3	Plastic control cover	1	0
	SPOA-PC4	Plastic control cover	0	1
4	TO-2-8900(XG150046)	Main switch	2	1
5	FA7274-9D	Mounting plate	2	1
6	FA7274-10D	Mounting plate	2	1
7	KTB2-STB	End capped	2	1
8	NP797-1	Label	2	1
9	A22-RD-50/K10	Pad lock button	2	1
10	A22-QDDL-30/30/K30	Up and down button	2	1
11	FA7180-11	U-type nut clip	12	12
12	B19-#8-1/2	Cross recessed pan tapping screw#8-1/2	12	12
13	B25-8*10	Hex socket screw M8*10	10	10
14	FA7274-8D	Mounting plate	1	1
15	SPOA40E-9803-02	Air Fitting	1	1
16	SPOA40E-9803-03	Air Fiiting	1	1
17	XTCG018C00DT	AC contactor	1	1
18	PLD10-16/IN/C/003	Leakage protector	1	0
19	ME11012	Euro receptacle	1	0
20	B26-4*20	Hexgan socket screw M4*20	4	0
21	B33-4	Nylon nut M4	4	0
22	FA7417-11E	Plastic wire cover	1	1
23	FA7417-11C	Plastic wire cover	1	1
24	FA7417-11A	Plastic wire cover	1	1
25	FA7417-11D	Plastic wire cover	1	1
26	FA7417-11B	Plastic wire cover	1	1
27	G3T-1200(N622)	Lock system assembly	2	2

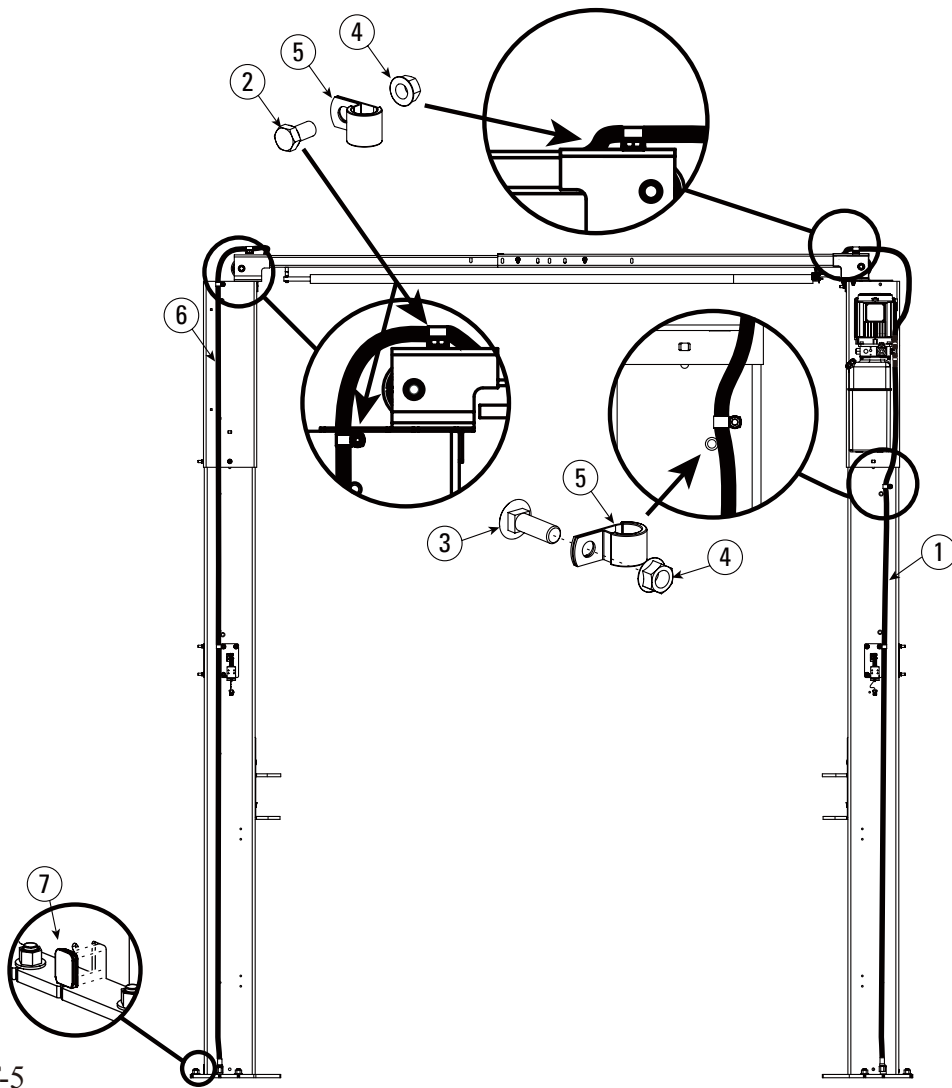
C mean the two side control ,S mean only one side control



SPOA3T-5

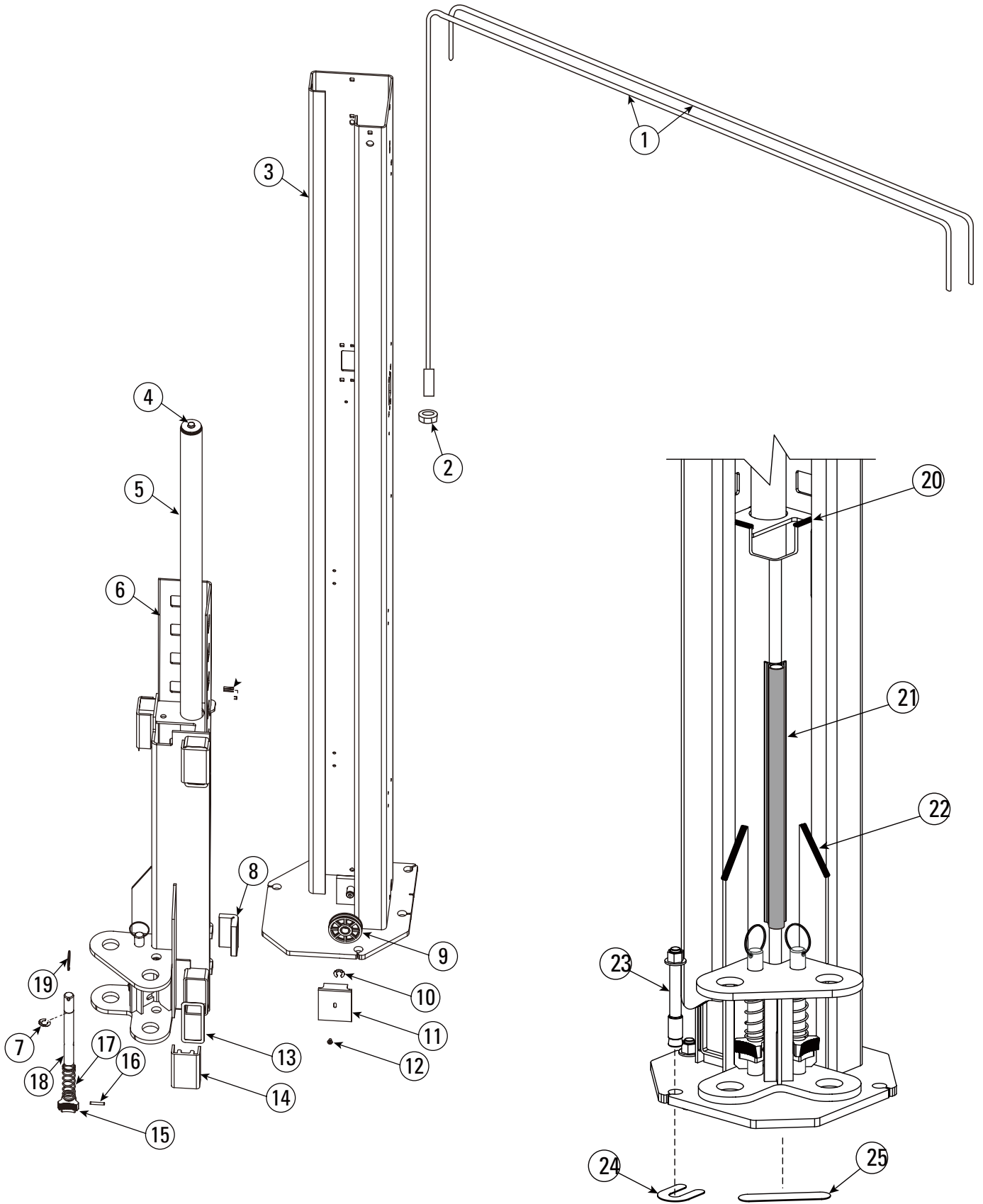
### Detail for PB-SPOA-3

	Partno.	Description	Qty
1	41536(B11-10*20)	M10*20 HHCS grade8.8 plated	8
2	41655(NFS10100082S)	M10 serrated flanged locknut,plate	24
3	41660(B11-6*70)	M6*70 HHCS grade8.8 plated	1
4	B33-6	M6 nylock nut ,plated	1
5	G3T-4003(FJ7871)	Spacer	2
6	N481-1(G3T-4200)	Right hand overhead weldment	1
7	N415(G3T-4002)	Overhead switch bar	1
8	N480-1(G3T-4100)	Left hand overhead weldment	1
9	N412(G3T-4004)	Overhead switch assembly	1
10	41413(B11-6*20)	M6*20 HHCS grade8.8 plated	2
11	41599(WLE061000220)	External tooth lockwasher,plated Φ6	2
12	41661(B31-6)	Hexagon nut M6 grade8.8 plated	2
13	N377	Overhead sheave	4
14	41388	Washer 1-1/2"OD	4
15	41411	Klipring for shaft	4
16	G3T-4001(GJ7444-8)	Sheave shaft	2
17	G3T-4300(N4101)	Overhead mounting bracket	2
18	41646(BCQ101020820)	Carriage bolt M10*20 grade8.8 plated	16
19	G3T-2101(N4109-1)	EH1 column extension	2
	G3T-2201(N4110-1)	EH2 column extension	2
20	41658(BCQ061012820)	Carriage bolt,plated M6*1.0*12	6
21	G3T-1004(N1224-6)	Mounting stud	6



SPOA3T-5

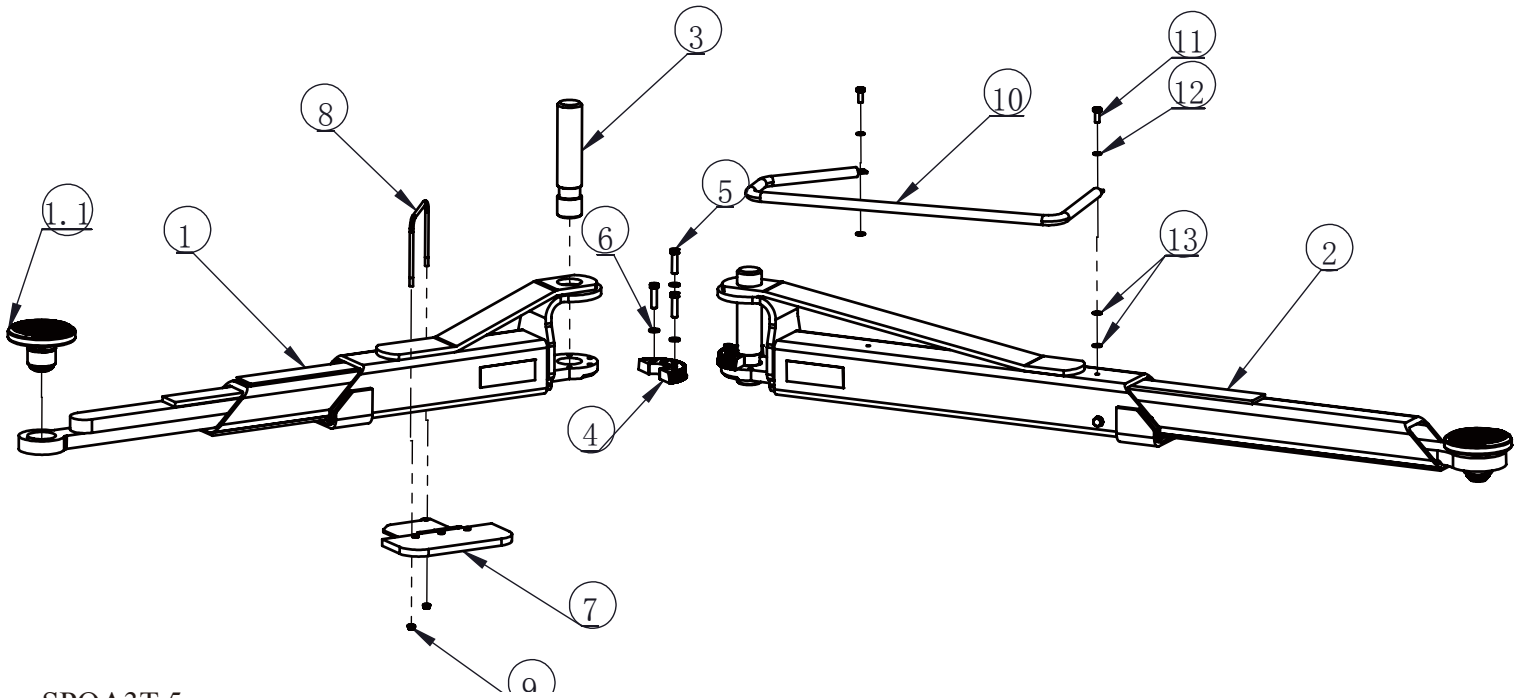
Detail for PB-SPOA-4			
	Partno.	Description	Qty
1	N3113	Power unit hydraulic hose	1
2	41536(B11-10*20)	M10*20 HHCS grade8.8 plated	2
3	41646(BCQ101020820)	Carriage bolt M10*20 grade8.8 plated	2
4	41655(NFS10100082S)	M10 serrated flanged locknut,plate	4
5	G3T-8005(N3126)	Hose clamp	4
6	G3T-2103(N3114)	Overhead hydraulic hose for EH1	1
	G3T-2203(N3115)	Overhead hydraulic hose for EH2	1
7	G3T-8002(FA964)	Lower column hole plug	2



SPOA3T-5

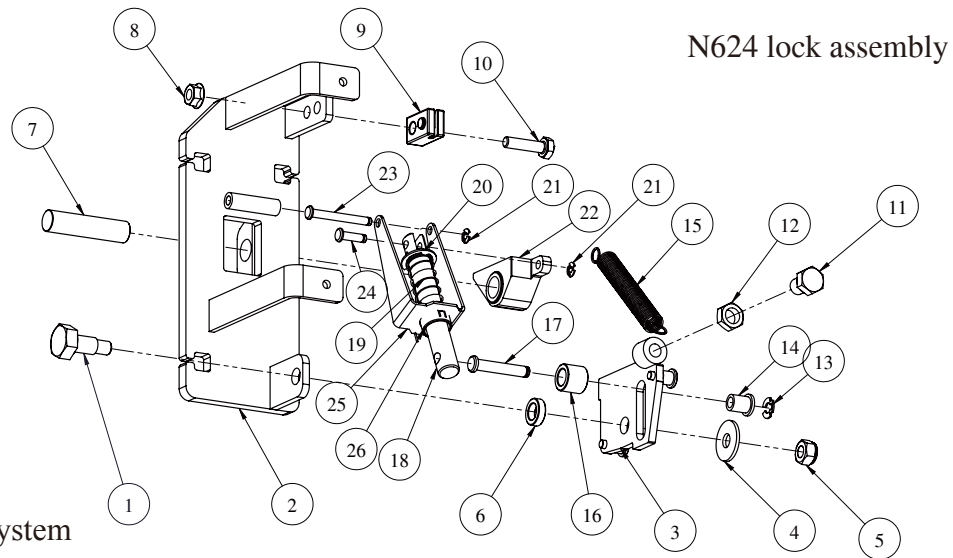
## Detail for PB-SPOA-5

	PartNo.	Description	Qty
1	G3T-2102(N3120)	Equalizer cables for EH1	1
	G3T-2202(N3121)	Equalizer cables for EH2	1
2	B33-12	Nylon lock nut M12	NA
3	G3T-1100(N762)	Column weldment	2
4	N380-10Y	Bleeder screw	NA
5	N382Y	Hydraulic cylinder	1
6	G3T-3100(N828)	Carriage assembly	2
7	N119-3	Retaining ring 1"	4
8	G3T-3002(N1224-2)	Real slider block	2
9	N377	Sheave	2
10	41411	Klipring for shaft 3/4"	2
11	G3T-1001(N119-1)	Sheave cover	2
12	40063	Phillips PHMS,plated 1/4"-20NC*3/8"	2
13	G3T-3004(N115)	Slider block shim	8
14	G3T-3003(N1224-1)	Slider block	4
15	N2121Y	Arm restraint pawl	4
16	14427	Spring pin 1/4"*1-1/2"	4
17	G3T-3005(FJ7656-2)	Arm restraint spring	4
18	G3T-3006 (N121-1Y)	Actuator pin	4
19	FJ7985-1	Actuator pin handle	4
20	G3T-8004(FA962)	Upper carriage bumper	4
21	G3T-8001 (FA961)	Column door bumper	2
22	G3T-8003(FA941)	Carriage gusset bumper	4



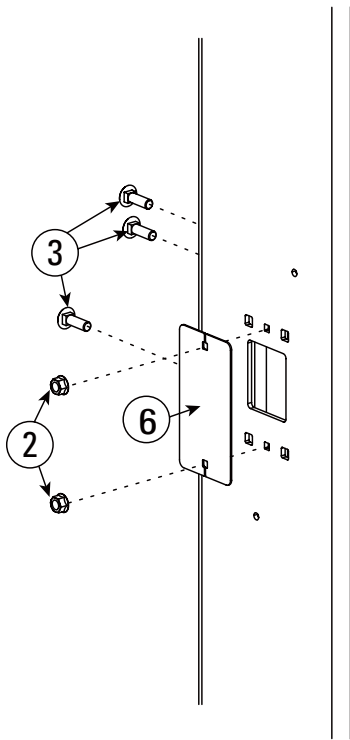
SPOA3T-5

Detail for PB-SPOA-6(Arm assembly)			
	PartNo.	Description	Qty
1	N2224Y	Front arm assembly	2
1.1	FJ6206	Low profile adapter assembly	4
2	N2225Y	Rear arm assembly	2
3	G3T-5001(N2154)	Arm pin	4
4	N2122Y	Restraint gear	4
5	40373	3/8"-16NC*1-1/2"HHCS,grade 8.8 ,plated	6
6	40818	Spring lockwasher 3/8"	6
7	G3T-5500(N2255-1)	Front arm guard assembly	2
8	G3T-5504(N2255-10)	Long strap	2
	G3T-5505(N2255-11)	Short strap	2
9	40641(991490)	Hex FLGD wzlock nut PLTD 1/4"-20NC	4
10	G3T-6001(N244-4)	Arm guard	2
11	40252	HHCS plated 5/16"-18NC*3/4"	4
12	40850	Spring lockwasher 5/16"	4
13	40856	Flat washer 5/16"	8

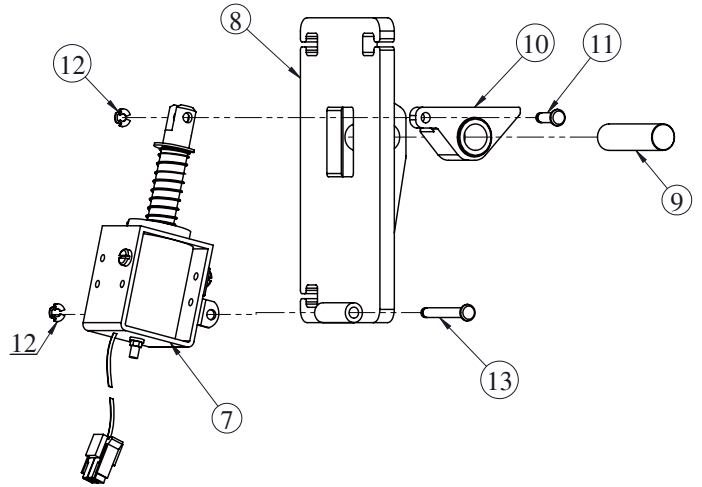
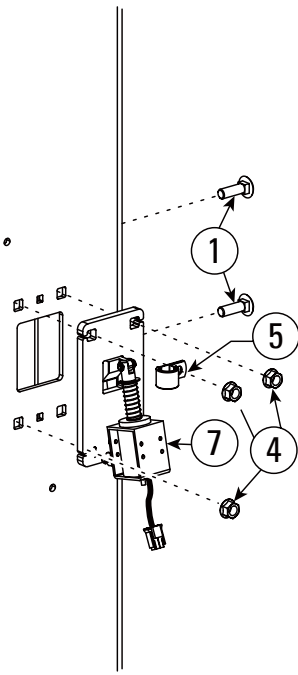


SPOA3T-M lock system

Detail for PB-SPOA-7(M version lock system) 2pcs N624			
	Partno.	Description	Qty
1	BS10-8-10	Shoulder bolt	1
2	ATO-1100(N624-7)	Bracket weld	1
3	ATO-1200(N624-3)	Latch control plated weld	1
4	B42-8	Big washer 8	1
5	B33-8	Nylon lock nut M8	1
6	ATO-1011(N624-15)	Spacer	1
7	G3T-1202(N621-7)	Latch shaft	1
8	40641	Hex flgd wzlock nut 1/4"-20NC	1
9	N619	Cable end bracket	1
10	40108	Hex bolt 1/4"-20NC*1"	1
11	40126	Hex bolt 3/8"-16NC*1/2"	1
12	40658	Hex Jam nut 3/8"-16NC	1
13	41687	Snap ring 1/4"	1
14	ATO-1007(N624-11)	Flanged bushing	1
15	ATO-1004(N624-12)	Spring	1
16	ATO-1010(N624-14)	Spacer	1
17	ATO-1008(N624-9)	Latch pivot pin	1
18	ATO-1006(N624-1)	Latch control shaft	1
19	ATO-1005(N624-2)	Spring	1
20	41686	Snap ring 1/2"	1
21	41472	Snap ring 3/16"	2
22	G3T-1205(N621-5)	Latch	1
23	G3T-1203(N621-8)	Shaft	1
24	G3T-1204(N621-9)	Shaft	1
25	ATO-1003(N624-6)	Mechanical latch spring bracket	1
26	ATO-1009(N624-5)	Mechanical latch shaft bushing	1



SPOA3T-S lock system



N622 lock assembly

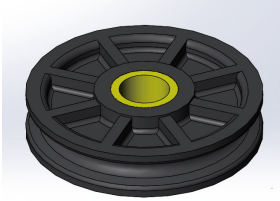
### Detail for PB-SPOA-8(E version lock system)

	Partno.	Description	Qty
1	41658	Carriage bolt,plated M6*12 8.8 grade	4
2	41656	Serrated flanged locknut M6	4
3	41648	Carriage bolt,plated M10*30 8.8 grade	6
4	41655(NFS10100082S)	Serrated flanged locknut M10	6
5	G3T-8005(N3126)	Hose clip	2
6	G3T-1201(N1224-8)	Cover plate	2
7	N621-6	Solenoid	2
8	G3T-1210(N622-1)	Bracket weld	2
9	G3T-1202(N621-7)	Shaft	2
10	G3T-1205(N621-5)	Latch	2
11	G3T-1204(N621-9)	Shaft	2
12	41472	Snap ring 3/16"	4
13	G3T-1203(N621-8)	Shaft	2



## IV. Spare Parts List

1.



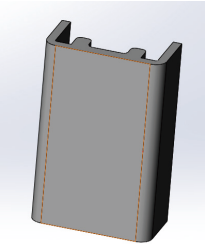
Part.No	Description	Qty	Dim
N377	Sheave with bearing	6	Φ88.9*19.05

2.



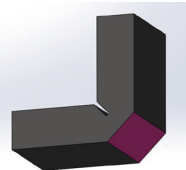
Part.No	Description	Qty	Dim
FJ6202	Adapter	4	

3.



Part.No	Description	Qty
G3T-3003	Slider	8

4.



Part.No	Description	Qty
HTO-2003	Slider on the top(38.1mm)	2

5.



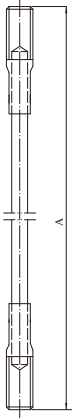
Part.No	Description	Qty
G3T-3004	Spacer for slider	8

6.



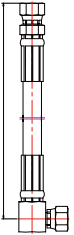
Part.No	Description	Qty
G3T-3002	slider on the top	2

7.



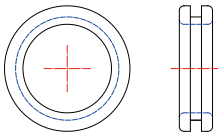
Part.No.	Description	Qty	Dim A
G3T-2102	Equalizer cable for EH1	1	9690mm
G3T-2202	Equalizer Cable for EH2	1	10299mm

8.



Part.No.	Description	Qty	Dim A
G3T-2103	Hydraulic hose for EH1	1	7523mm
G3T-2203	Hydraulic hose for EH2	1	8132mm
N3113	Power unit hydraulic hose	1	3105mm

9.



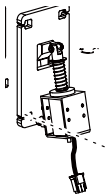
Part.No	Description	Qty
G3T-2105	Hose cover	1

10.



Part.No	Description	Qty
N624	Lock system assembly for M Version	2

11.



Part.No	Description	Qty
G3T-1200(N622)	Lock system assembly for E Version	2
N621-6	solenoid	2

12.

Part.No	Description	Qty	Remark
N967-1-Bag-3	package for install	1	
Bolts anf fitting for installing the Power unit			

13.

Part.No	Description	Qty	Remark
SPOA3T-D2	package for install	1	
Bolts for installing the plastic cover to the post			

14.

Part.No	Description	Qty	Remark
SPOA3T-D1N	package for install	1	
Bolts for installing arm restraint gear ,wire cover,lock system to the post			

### Other hydraulic components

Part.No	Description	Qty	Remark
N382Y-9180	Seal kit for cylinder	1	

**ATTACHMENT**  
**Two column Lift**  
**SPOA3T-5**

**Maintenance schedule:**

**Notes for execution of the visual and  
functional testing**

# Notes for execution of the visual and functional testing

In the scope of periodical inspections, the followings must be checked in particular:

1. Information on the lifting platform	Object to be checked
Nameplate Labeling Summary of the manual	Fastening Readability Completeness
2. Detailed operating instructions	Condition Readability
3. Warnings	Condition Noticeability
4. Protection against unauthorized use	Condition Function Mobility Safety key
5. Actuators	
Lifting, lowering Tilting, tipping Turning, pivoting Switching Opening and closing (of the loading tailgate) Driving Supports	Condition Function Mobility Clear assignment Permanent labeling of the direction of movement Protection against unintentional actuation Locking mechanism of the actuators with multiple controls
6. Emergency shutdown, Emergency drainage	Condition Function Mobility
7. Signalling devices, devices for communication	Condition Function Noticeability Reliability
8. Devices for the stable installation	
Spirit level Supports Spindles Bottom pan Elimination of the spring travel	Condition Function Mobility Wear Deformation Corrosion Cracks
9. Supporting structure	Cracks Deformation Corrosion Mobility of guides, pulleys, hinges, telescopes, Wear of guides, pulleys, hinges, fastening and securing of removable parts Effectiveness of locking mechanisms

10. Load suspension devices	
Protection against sliding Roll-off protection Holding device Protection of the hinged bracket	Condition Function
Safety fence	Condition Corrosion Fastening and securing of removable parts Effectiveness of locking mechanisms Mobility of movable parts
Ground	Surefootedness Deformation Corrosion Fastening and securing of removable parts
Parallel motion on operating platforms	Condition Function Wear Cracks Corrosion
Stowable operating platform	Condition and effectiveness of the locking mechanism
Stairs	Surefootedness Deformation Corrosion Damage Fastening and securing of removable parts Welded connections
11. Steel wire rope Cable connections	
	Wear Corrosion Wire breakages Wire break nests Pinch points Loosening of the outer layer Bird-caging
Sheaves and pulleys	Cracks Signs of wear Burr formation in the groove Correct aligning of the groove
Rope winding Clamping device Securing at rope bearings Protection against coming off of the rope	Condition Function
12. Steel link chains, chain linkings	
	Mobility Wear Cracks Securing of the studs, e.g. by rivet head, ring

Chain wheels Sprockets	Condition Function
Clamping device Securing of the chain guide	Condition Function
13. Spindles	Storage Deformation Contamination Wear of the threads Notches Striations Grooves, applications Efficiency of the covering
Main nut	Wear of the thread (play)
Compensation ring	Bearing Condition Notches Striations
14. Racks	Fastening Wear Contamination Joints of jointed racks
Pinions	Cracks Wear Contamination Fastening and play of the spindle
15. Hydraulics	Leakage Leak test Venting
Oil reservoir	Condition and readability of the display Control of the oil quantity Efficiency of the shut-off device in case of lack of oil
Lines Line connections	Fastening Damages Deformation Corrosion
Hoses Hose connections	Fastening Damage Age Brittleness Porosity
Cylinders	Fastening Cracks Pipe connections and hose connections Tightness of the sleeves
Pistons	Surface of the piston rod Striations Contamination

Filters	External condition
Pressure control valve	External condition Lead seal undamaged
16. Pneumatics	
Lines Line connections	Leakage Fastening Damage Deformation Corrosion
Hoses Hose connections	Fastening Damage Age Brittleness Porosity
Cylinders	Fastening, cracks, pipe connections and hose connections Tightness of the sleeves
Pistons	Surface of the piston rod, striations, contamination
Relief valve	External condition, lead seal undamaged
Gauge, pressure reducer	External condition and effectiveness
17. Driving mechanisms (without bogie)	Connections of parts of the driving mechanism shock-free starting
Brakes, self-locking gearbox, couplings	Wear, effectiveness
18. Driving carriage, bogie	
Service brakes, emergency brakes	Wear, effectiveness
Drawbar protection	Condition, effectiveness
Positive guide, guide rail Rail joints, end stops, cow-catcher Protection against derailling	Deformation, cracks, condition of the fastening
19. Points of access and points of loading	Surefootedness, deformation of handrails, damage Corrosion, securing of removable parts
20. Electrical equipment	
Lines	Damage, fastening, strain relief of external lines
Protective earth	Damage, fastening
21. Insulation on aerial work platforms, as far as the aerial work platform is intended for work on or near unprotected, live parts of electrical installations	
Insulation work platform/lifting equipment as well as lifting equipment/driving carriage	Contamination, damage, insulation resistance
22. Special safety devices	
Emergency limit switch, slack rope switch, rope break switch, chain fracture switch, control locks, switch-off strips, restart protection, anti-tipping device (for stowable work platforms), safety catch, completeness	Effectiveness, fastening, condition Deformation, effectiveness of the switch elements, contamination, condition of pressure springs

These notes do not claim to be complete, and they must be matched to the lifting platforms to be examined.



# ATTACHMENT

Four column lifting platforms  
Inspection log



# Inspection log for lifting platforms

Type: \_\_\_\_\_

Serial number: \_\_\_\_\_

Year of construction: \_\_\_\_\_

Operator: \_\_\_\_\_

Day of first commissioning: \_\_\_\_\_

BlitzRotary GmbH  
Hüfinger Straße 55  
D-78199 Bräunlingen



Telephone +49.771.9233.0

Fax +49.771.9233.99

europa@rotarylifl.com

www.rotarylifl.com



# Test Report

Of the examination before the first commissioning by technical expert / surveyor  
The lifting platform underwent an examination regarding operational readiness on \_\_\_\_\_

The following/no\*) faults found. \_\_\_\_\_

\_\_\_\_\_

\_\_\_\_\_

Test scope \_\_\_\_\_

Still pending \_\_\_\_\_

Partial tests \_\_\_\_\_

There are no\*) reasons against continued operation, retesting is not\*) required.  
The technical expert/surveyor

\_\_\_\_\_ (Place ,date) \_\_\_\_\_ (Signature)

Name and address  
(in block letters ) \_\_\_\_\_

Job title \_\_\_\_\_

Employed at \_\_\_\_\_

## Operator or Representative

Deficiencies noted

\_\_\_\_\_ (Place ,date) \_\_\_\_\_ (Signature)

Deficiencies fixed

\_\_\_\_\_ (Place ,date) \_\_\_\_\_ (Signature)

## Retesting

The lifting platform underwent retesting on \_\_\_\_\_  
The deficiencies which were pointed out in the examination have not\*) been fixed yet.

There are no\*) reasons against continued operation, retesting is not\*) required.  
The technical expert/surveyor

\_\_\_\_\_ (Place ,date) \_\_\_\_\_ (Signature)

Name \_\_\_\_\_ and \_\_\_\_\_ address  
(in block letters) \_\_\_\_\_

Job title \_\_\_\_\_

Employed at \_\_\_\_\_



# Test Report

Of the examination before the first commissioning by technical expert / surveyor  
The lifting platform underwent an examination regarding operational readiness on \_\_\_\_\_

The following/no\*) faults found.

Test scope \_\_\_\_\_

Still pending \_\_\_\_\_

Partial tests \_\_\_\_\_

There are no\*) reasons against continued operation, retesting is not\*) required.

The technical expert/surveyor

\_\_\_\_\_ (Place ,date)

\_\_\_\_\_ (Signature)

Name and address

(in block letters ) \_\_\_\_\_

Job title \_\_\_\_\_

Employed at \_\_\_\_\_

## Operator or Representative

Deficiencies noted

\_\_\_\_\_ (Place ,date)

\_\_\_\_\_ (Signature)

Deficiencies fixed

\_\_\_\_\_ (Place ,date)

\_\_\_\_\_ (Signature)

## Retesting

The lifting platform underwent retesting on \_\_\_\_\_

The deficiencies which were pointed out in the examination have not\*) been fixed yet.

There are no\*) reasons against continued operation, retesting is not\*) required.

The technical expert/surveyor

\_\_\_\_\_ (Place ,date)

\_\_\_\_\_ (Signature)

Name

and

address

(in block letters) \_\_\_\_\_

Job title \_\_\_\_\_

Employed at \_\_\_\_\_





# Test Report

Of the examination before the first commissioning by technical expert / surveyor

The lifting platform underwent an examination regarding operational readiness on \_\_\_\_\_

The following/no\*) faults found.

Test scope \_\_\_\_\_

Still pending \_\_\_\_\_

Partial tests

There are no\*) reasons against continued operation, retesting is not\*) required.

The technical expert/surveyor

\_\_\_\_\_  
(Place ,date)

\_\_\_\_\_  
(Signature)

Name and address  
(in block letters ) \_\_\_\_\_

Job title \_\_\_\_\_

Employed at \_\_\_\_\_

## Operator or Representative

Deficiencies noted

\_\_\_\_\_  
(Place ,date)

\_\_\_\_\_  
(Signature)

Deficiencies fixed

\_\_\_\_\_  
(Place ,date)

\_\_\_\_\_  
(Signature)

## Retesting

The lifting platform underwent retesting on \_\_\_\_\_

The deficiencies which were pointed out in the examination have not\*) been fixed yet.

There are no\*) reasons against continued operation, retesting is not\*) required.

The technical expert/surveyor

\_\_\_\_\_  
(Place ,date)

\_\_\_\_\_  
(Signature)

Name

and

address

(in block letters) \_\_\_\_\_

Job title \_\_\_\_\_

Employed at \_\_\_\_\_



# Test Report

Of the examination before the first commissioning by technical expert / surveyor or

The lifting platform underwent an examination regarding operational readiness on \_\_\_\_\_

The following/no\*) faults found.

Test scope \_\_\_\_\_

Still pending \_\_\_\_\_

Partial tests

There are no\*) reasons against continued operation, retesting is not\*) required.

The technical expert/surveyor

\_\_\_\_\_  
(Place ,date)

\_\_\_\_\_  
(Signature)

Name and address

(in block letters ) \_\_\_\_\_

Job title \_\_\_\_\_

Employed at \_\_\_\_\_

## Operator or Representative

Deficiencies noted

\_\_\_\_\_  
(Place ,date)

\_\_\_\_\_  
(Signature)

Deficiencies fixed

\_\_\_\_\_  
(Place ,date)

\_\_\_\_\_  
(Signature)

## Retesting

The lifting platform underwent retesting on \_\_\_\_\_

The deficiencies which were pointed out in the examination have not\*) been fixed yet.

There are no\*) reasons against continued operation, retesting is not\*) required.

The technical expert/surveyor

\_\_\_\_\_  
(Place ,date)

\_\_\_\_\_  
(Signature)

Name

and

address

(in block letters) \_\_\_\_\_

Job title \_\_\_\_\_

Employed at \_\_\_\_\_



# Test Report

Of the examination before the first commissioning by technical expert / surveyor

The lifting platform underwent an examination regarding operational readiness on \_\_\_\_\_

The following/no\*) faults found.

Test scope \_\_\_\_\_

Still pending \_\_\_\_\_

Partial tests

There are no\*) reasons against continued operation, retesting is not\*) required.

The technical expert/surveyor

\_\_\_\_\_  
(Place ,date)

\_\_\_\_\_  
(Signature)

Name and address  
(in block letters ) \_\_\_\_\_

Job title \_\_\_\_\_

Employed at \_\_\_\_\_

## Operator or Representative

Deficiencies noted

\_\_\_\_\_  
(Place ,date)

\_\_\_\_\_  
(Signature)

Deficiencies fixed

\_\_\_\_\_  
(Place ,date)

\_\_\_\_\_  
(Signature)

## Retesting

The lifting platform underwent retesting on \_\_\_\_\_

The deficiencies which were pointed out in the examination have not\*) been fixed yet.

There are no\*) reasons against continued operation, retesting is not\*) required.

The technical expert/surveyor

\_\_\_\_\_  
(Place ,date)

\_\_\_\_\_  
(Signature)

Name

and

address

(in block letters) \_\_\_\_\_

Job title \_\_\_\_\_

Employed at \_\_\_\_\_



# Test Report

Of the examination before the first commissioning by technical expert / surveyor  
The lifting platform underwent an examination regarding operational readiness on \_\_\_\_\_

The following/no\*) faults found.  
\_\_\_\_\_  
\_\_\_\_\_  
\_\_\_\_\_  
\_\_\_\_\_

Test scope \_\_\_\_\_

Still pending \_\_\_\_\_

Partial tests \_\_\_\_\_

There are no\*) reasons against continued operation, retesting is not\*) required.  
The technical expert/surveyor

\_\_\_\_\_ (Place ,date) \_\_\_\_\_ (Signature)

Name and address  
(in block letters ) \_\_\_\_\_

Job title \_\_\_\_\_  
Employed at \_\_\_\_\_

## Operator or Representative

Deficiencies noted  
\_\_\_\_\_

\_\_\_\_\_ (Place ,date) \_\_\_\_\_ (Signature)

Deficiencies fixed  
\_\_\_\_\_

\_\_\_\_\_ (Place ,date) \_\_\_\_\_ (Signature)

Retesting  
The lifting platform underwent retesting on \_\_\_\_\_

The deficiencies which were pointed out in the examination have not\*) been fixed yet.  
\_\_\_\_\_

There are no\*) reasons against continued operation, retesting is not\*) required.  
The technical expert/surveyor

\_\_\_\_\_ (Place ,date) \_\_\_\_\_ (Signature)

Name \_\_\_\_\_ and \_\_\_\_\_ address  
(in block letters) \_\_\_\_\_

Job title \_\_\_\_\_  
Employed at \_\_\_\_\_





# Test Report

Of the examination before the first commissioning by technical expert / surveyor

The lifting platform underwent an examination regarding operational readiness on \_\_\_\_\_

The following/no\*) faults found.

Test scope \_\_\_\_\_

Still pending \_\_\_\_\_

Partial tests

There are no\*) reasons against continued operation, retesting is not\*) required.

The technical expert/surveyor

\_\_\_\_\_  
(Place ,date)

\_\_\_\_\_  
(Signature)

Name and address

(in block letters ) \_\_\_\_\_

Job title \_\_\_\_\_

Employed at \_\_\_\_\_

## Operator or Representative

Deficiencies noted

\_\_\_\_\_  
(Place ,date)

\_\_\_\_\_  
(Signature)

Deficiencies fixed

\_\_\_\_\_  
(Place ,date)

\_\_\_\_\_  
(Signature)

## Retesting

The lifting platform underwent retesting on \_\_\_\_\_

The deficiencies which were pointed out in the examination have not\*) been fixed yet.

There are no\*) reasons against continued operation, retesting is not\*) required.

The technical expert/surveyor

\_\_\_\_\_  
(Place ,date)

\_\_\_\_\_  
(Signature)

Name

and

address

(in block letters) \_\_\_\_\_

Job title \_\_\_\_\_

Employed at \_\_\_\_\_



# Test Report

Of the examination before the first commissioning by technical expert / surveyor

The lifting platform underwent an examination regarding operational readiness on \_\_\_\_\_

The following/no\*) faults found.

Test scope \_\_\_\_\_

Still pending \_\_\_\_\_

Partial tests

There are no\*) reasons against continued operation, retesting is not\*) required.

The technical expert/surveyor

\_\_\_\_\_ (Place ,date)

\_\_\_\_\_ (Signature)

Name and address  
(in block letters ) \_\_\_\_\_

Job title \_\_\_\_\_

Employed at \_\_\_\_\_

## Operator or Representative

Deficiencies noted

\_\_\_\_\_ (Place ,date)

\_\_\_\_\_ (Signature)

Deficiencies fixed

\_\_\_\_\_ (Place ,date)

\_\_\_\_\_ (Signature)

## Retesting

The lifting platform underwent retesting on \_\_\_\_\_

The deficiencies which were pointed out in the examination have not\*) been fixed yet.

There are no\*) reasons against continued operation, retesting is not\*) required.

The technical expert/surveyor

\_\_\_\_\_ (Place ,date)

\_\_\_\_\_ (Signature)

Name

and

address

(in block letters) \_\_\_\_\_

Job title \_\_\_\_\_

Employed at \_\_\_\_\_



# Test Report

Of the examination before the first commissioning by technical expert / surveyor

The lifting platform underwent an examination regarding operational readiness on \_\_\_\_\_

The following/no\*) faults found.

Test scope \_\_\_\_\_

Still pending \_\_\_\_\_

Partial tests

There are no\*) reasons against continued operation, retesting is not\*) required.

The technical expert/surveyor

\_\_\_\_\_ (Place ,date)

\_\_\_\_\_ (Signature)

Name and address

(in block letters ) \_\_\_\_\_

Job title \_\_\_\_\_

Employed at \_\_\_\_\_

## Operator or Representative

Deficiencies noted

\_\_\_\_\_ (Place ,date)

\_\_\_\_\_ (Signature)

Deficiencies fixed

\_\_\_\_\_ (Place ,date)

\_\_\_\_\_ (Signature)

## Retesting

The lifting platform underwent retesting on \_\_\_\_\_

The deficiencies which were pointed out in the examination have not\*) been fixed yet.

There are no\*) reasons against continued operation, retesting is not\*) required.

The technical expert/surveyor

\_\_\_\_\_ (Place ,date)

\_\_\_\_\_ (Signature)

Name

and

address

(in block letters) \_\_\_\_\_

Job title \_\_\_\_\_

Employed at \_\_\_\_\_



# Test Report

Of the examination before the first commissioning by technical expert / surveyor  
The lifting platform underwent an examination regarding operational readiness on \_\_\_\_\_

The following/no\*) faults found.  
\_\_\_\_\_  
\_\_\_\_\_  
\_\_\_\_\_  
\_\_\_\_\_

Test scope \_\_\_\_\_

Still pending \_\_\_\_\_

Partial tests \_\_\_\_\_

There are no\*) reasons against continued operation, retesting is not\*) required.  
The technical expert/surveyor

\_\_\_\_\_ (Place ,date) \_\_\_\_\_ (Signature)

Name and address  
(in block letters ) \_\_\_\_\_

Job title \_\_\_\_\_  
Employed at \_\_\_\_\_

## Operator or Representative

Deficiencies noted  
\_\_\_\_\_ (Place ,date) \_\_\_\_\_ (Signature)

Deficiencies fixed  
\_\_\_\_\_ (Place ,date) \_\_\_\_\_ (Signature)

Retesting  
The lifting platform underwent retesting on \_\_\_\_\_  
The deficiencies which were pointed out in the examination have not\*) been fixed yet.  
\_\_\_\_\_

There are no\*) reasons against continued operation, retesting is not\*) required.  
The technical expert/surveyor

\_\_\_\_\_ (Place ,date) \_\_\_\_\_ (Signature)

Name \_\_\_\_\_ and \_\_\_\_\_ address  
(in block letters) \_\_\_\_\_

Job title \_\_\_\_\_  
Employed at \_\_\_\_\_





# Test Report

Of the examination before the first commissioning by technical expert / surveyor

The lifting platform underwent an examination regarding operational readiness on \_\_\_\_\_

The following/no\*) faults found.

Test scope \_\_\_\_\_

Still pending \_\_\_\_\_

Partial tests

There are no\*) reasons against continued operation, retesting is not\*) required.

The technical expert/surveyor

\_\_\_\_\_ (Place ,date)

\_\_\_\_\_ (Signature)

Name and address

(in block letters ) \_\_\_\_\_

Job title \_\_\_\_\_

Employed at \_\_\_\_\_

## Operator or Representative

Deficiencies noted

\_\_\_\_\_ (Place ,date)

\_\_\_\_\_ (Signature)

Deficiencies fixed

\_\_\_\_\_ (Place ,date)

\_\_\_\_\_ (Signature)

## Retesting

The lifting platform underwent retesting on \_\_\_\_\_

The deficiencies which were pointed out in the examination have not\*) been fixed yet.

There are no\*) reasons against continued operation, retesting is not\*) required.

The technical expert/surveyor

\_\_\_\_\_ (Place ,date)

\_\_\_\_\_ (Signature)

Name

and

address

(in block letters) \_\_\_\_\_

Job title \_\_\_\_\_

Employed at \_\_\_\_\_



# Test Report

Of the examination before the first commissioning by technical expert / surveyor

The lifting platform underwent an examination regarding operational readiness on \_\_\_\_\_

The following/no\*) faults found.

Test scope \_\_\_\_\_

Still pending \_\_\_\_\_

Partial tests \_\_\_\_\_

There are no\*) reasons against continued operation, retesting is not\*) required.

The technical expert/surveyor

\_\_\_\_\_  
(Place ,date)

\_\_\_\_\_  
(Signature)

Name and address

(in block letters ) \_\_\_\_\_

Job title \_\_\_\_\_

Employed at \_\_\_\_\_

## Operator or Representative

Deficiencies noted

\_\_\_\_\_  
(Place ,date)

\_\_\_\_\_  
(Signature)

Deficiencies fixed

\_\_\_\_\_  
(Place ,date)

\_\_\_\_\_  
(Signature)

Retesting

The lifting platform underwent retesting on \_\_\_\_\_

The deficiencies which were pointed out in the examination have not\*) been fixed yet.

There are no\*) reasons against continued operation, retesting is not\*) required.

The technical expert/surveyor

\_\_\_\_\_  
(Place ,date)

\_\_\_\_\_  
(Signature)

Name

and

address

(in block letters) \_\_\_\_\_

Job title \_\_\_\_\_

Employed at \_\_\_\_\_





**Contact Your Nearest Authorized Rotary Parts Distributor  
For Genuine Rotary Replacement Parts.  
Please see the parts breakdown.**

<b>DATE</b>	<b>REV.</b>	<b>CHANGE MADE</b>
09-09-15	A	New annex manual for SPOA3T release

BlitzRotary GmbH  
Hüfingstraße 55  
D-78199 Bräunlingen

Tel +49.771.9233.0  
Fax +49.771.9233.99  
info@blitzrotary.com  
www.blitzrotary.com

USA: +1.812.273.1622 (Headquarter)  
Canada: +1.905.812.9920  
United Kingdom: +44.178.747.7711  
AustralAsia: +60.3.7660.0285

Latin America/Caribbean: +1.812.273.1622  
Middle East/Northern Africa: +49.771.9233.0  
Southern Africa: 1.812.273.1622  
Brazil: +55.11.4534.1995

**DOVER** COMPANY

